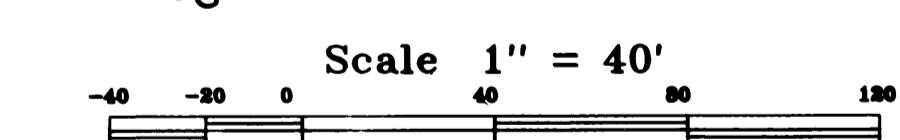
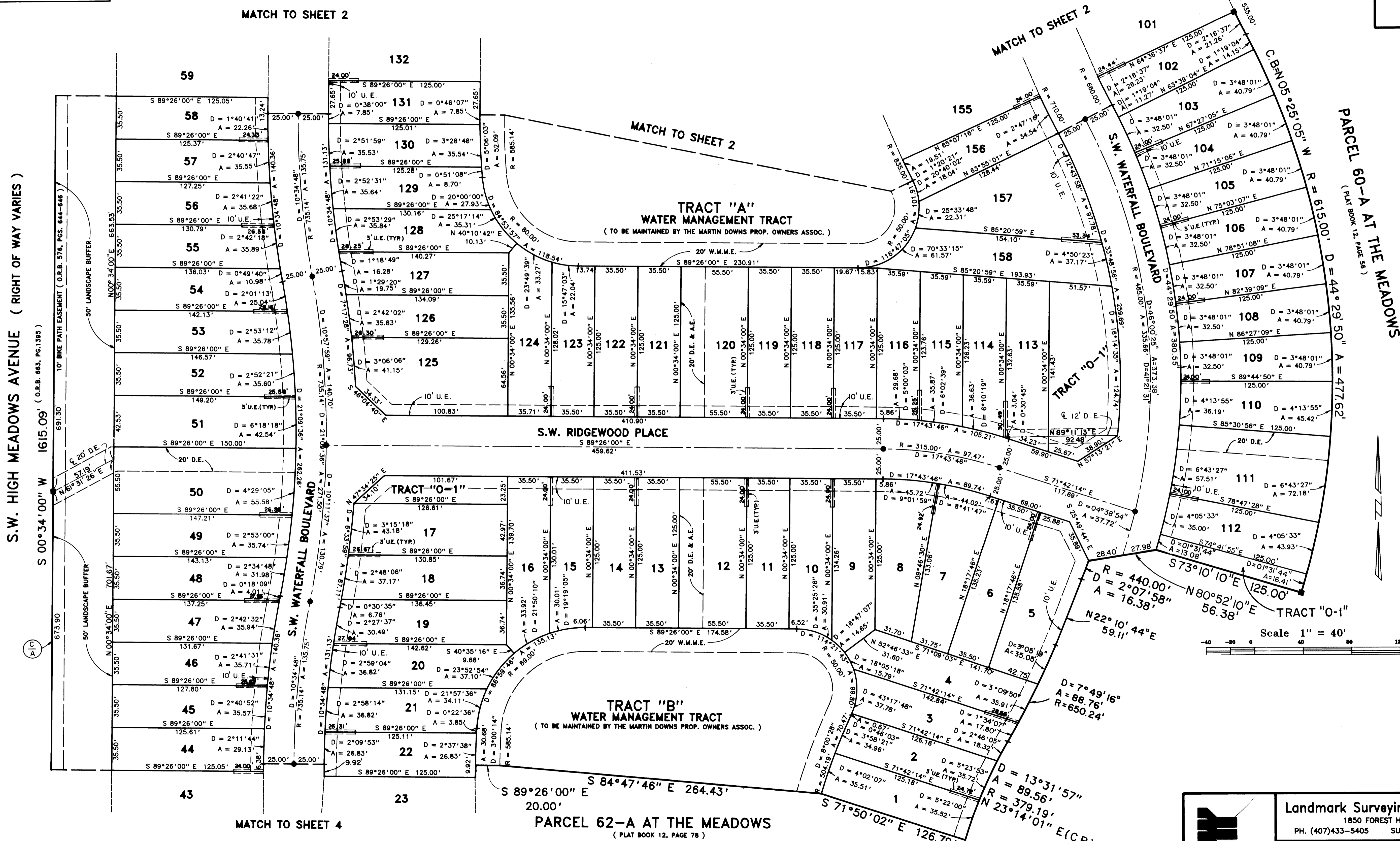


A PLAT OF
PARCEL 62-B AT THE MEADOWS
BEING PLAT NO. 61 OF MARTIN DOWNS A P.U.D. ALSO BEING A REPLAT OF
A PORTION OF PARCEL 62-A AT THE MEADOWS BEING PLAT NO. 57 OF MARTIN DOWNS
A P.U.D. AS RECORDED IN P.B. 12, PG. 78, PUBLIC RECORDS OF MARTIN COUNTY,
LYING IN SECTION 12, TOWNSHIP 38 SOUTH, RANGE 40 EAST MARTIN COUNTY, FLORIDA.
SHEET 3 OF 4 JANUARY, 1992

I, MARSHA STILLER, CLERK OF THE CIRCUIT COURT OF MARTIN COUNTY, FLORIDA, HEREBY CERTIFY THAT THIS PLAT WAS FILED FOR RECORD IN PLAT BOOK 12, PAGE 98, MARTIN COUNTY, FLORIDA, PUBLIC RECORDS, THIS DAY OF _____ A.D. 19____. MARSHA STILLER, CLERK OF CIRCUIT COURT MARTIN COUNTY, FLORIDA
By: _____ DEPUTY CLERK
FILE NO. _____



Landmark Surveying & Mapping Inc.
1850 FOREST HILL BOULEVARD
PH. (407)433-5405 SUITE 100 W.P.B. FLORIDA
PARCEL 62-B AT THE MEADOWS